

I.
RECORD N° 27.
PART OF EXHIBIT A. 7.

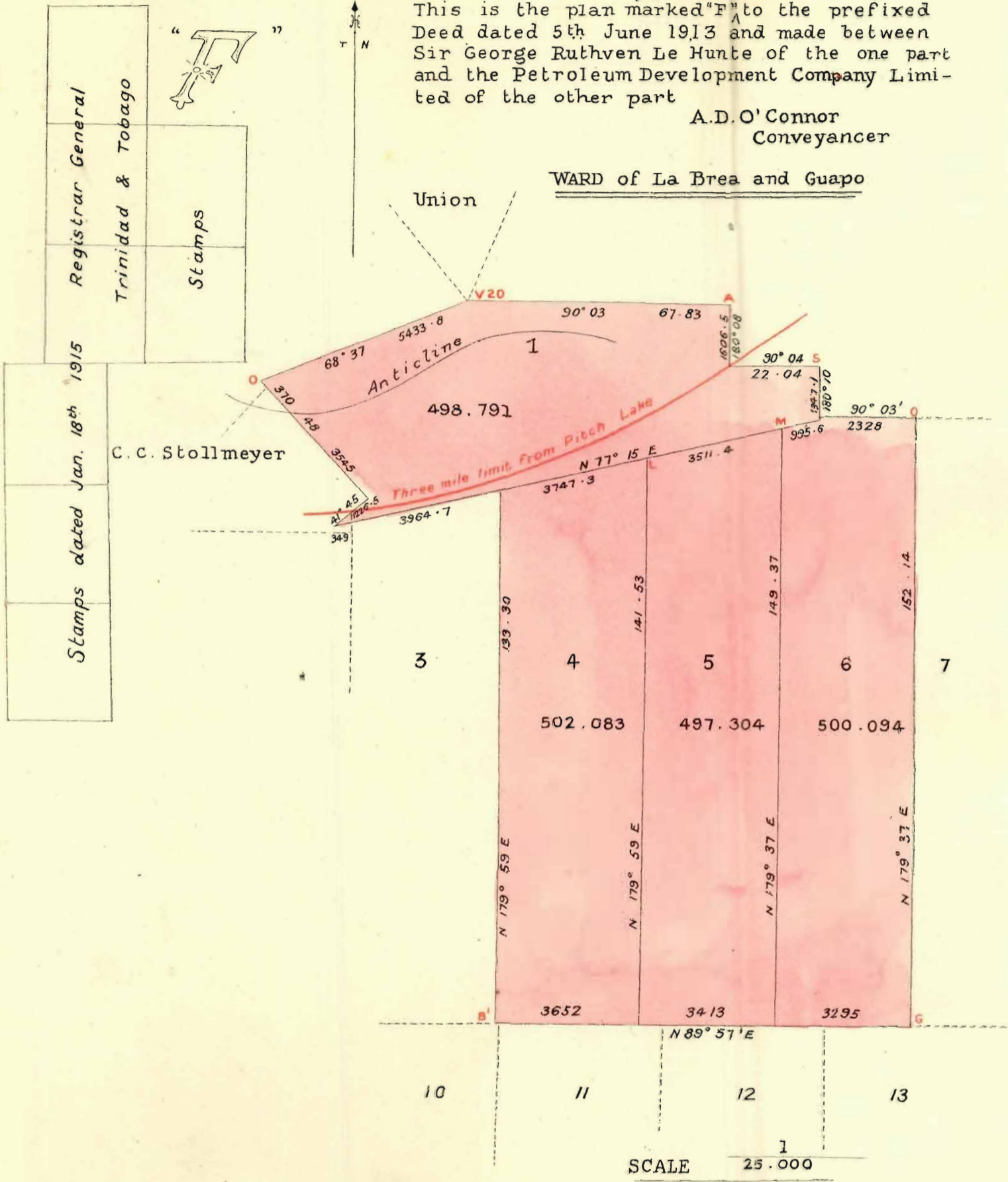
PLAN ATTACHED TO LICENSE FROM GOVERNOR OF TRINIDAD
TO THE PETROLEUM DEVELOPMENT CO., LTD., 5TH JUNE 1913.

referred to in Schedule "A" s.d. T.P.

This is the plan marked "F" to the prefixed Deed dated 5th June 1913 and made between Sir George Ruthven Le Hunte of the one part and the Petroleum Development Company Limited of the other part

A.D. O'Connor
Conveyancer

WARD of La Brea and Guapo



PLAN of four parcels of land to be licensed to the Petroleum
Development Company Limited.

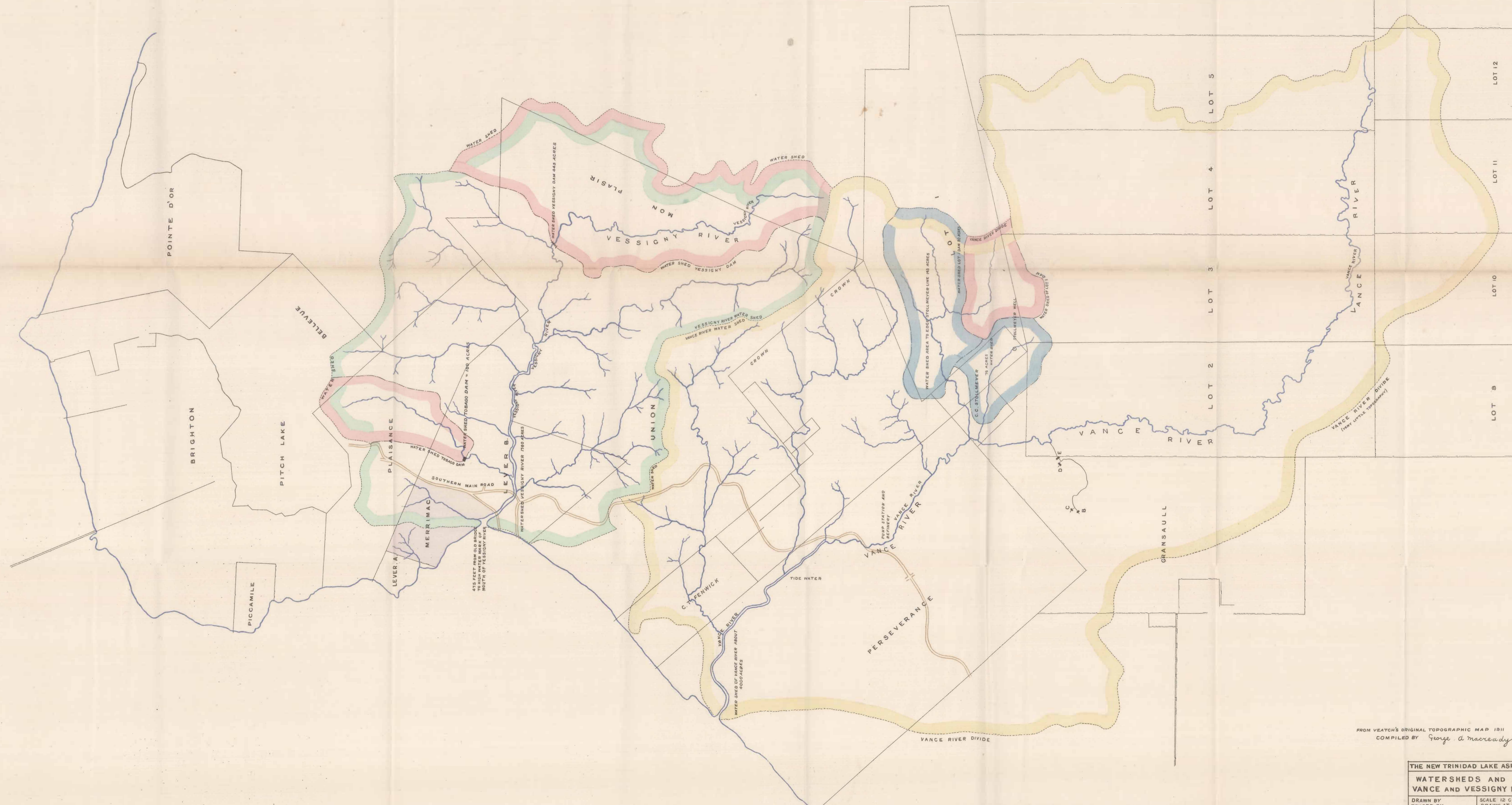
Edward R. Smart
E.C.S 31/3/13.

REGISTRAR GENERAL'S OFFICE
18th January 1915

I certify that the above is a true copy of the plan annexed to Deed N° 1506 of the Protocol of Deeds for the year 1913 in my Office.

Thomas V. Potter
sd. Registrar General.





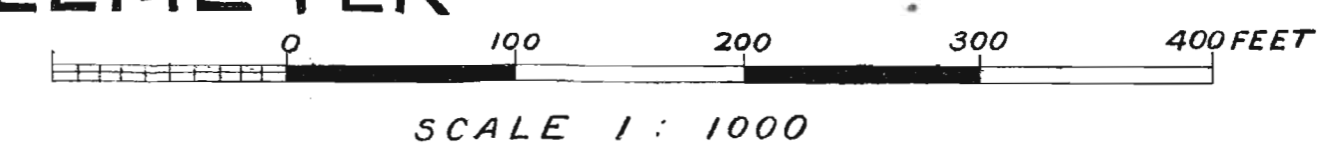
A9
 and C.C.S.E.

FROM VEATCH'S ORIGINAL TOPOGRAPHIC MAP 1911
 COMPILED BY *George A. Maccready*, 1914

THE NEW TRINIDAD LAKE ASPHALT CO.
WATERSHEDS AND DAMS
VANCE AND VESSIGNY RIVERS

DRAWN BY TRACED BY CHECKED BY APP'ED	SCALE 12 CH = 1" DRAWN AT BRIGHTON DATE OCT. 7, 1914 REVISED MANAGER FILENO.
---	--

MAP OF VESSIGNY RIVER FROM TOBAGO RIVER TO SEA SHOWING TIDE LIMITS AND LANDS OF N.T.L.A. CO. LTD. AND OF C. F. STOLLMEYER



SURVEYED BY JOHN G. HENDRIE
DRAWN BY GEO. B. BLACKSTONE
BRIGHTON TRINIDAD B.W.I. JANUARY 13, 1915.

J.G.H.1
Sd: [Signature] 21/1/15

MERRIMAC ESTATE
OWNED BY C.F. STOLLMEYER

NOTE:-- SECOND GROWTH BUSH, ABOUT 20' HIGH
A FEW SCATTERED COCONUT TREES NOT
UNDER CULTIVATION.

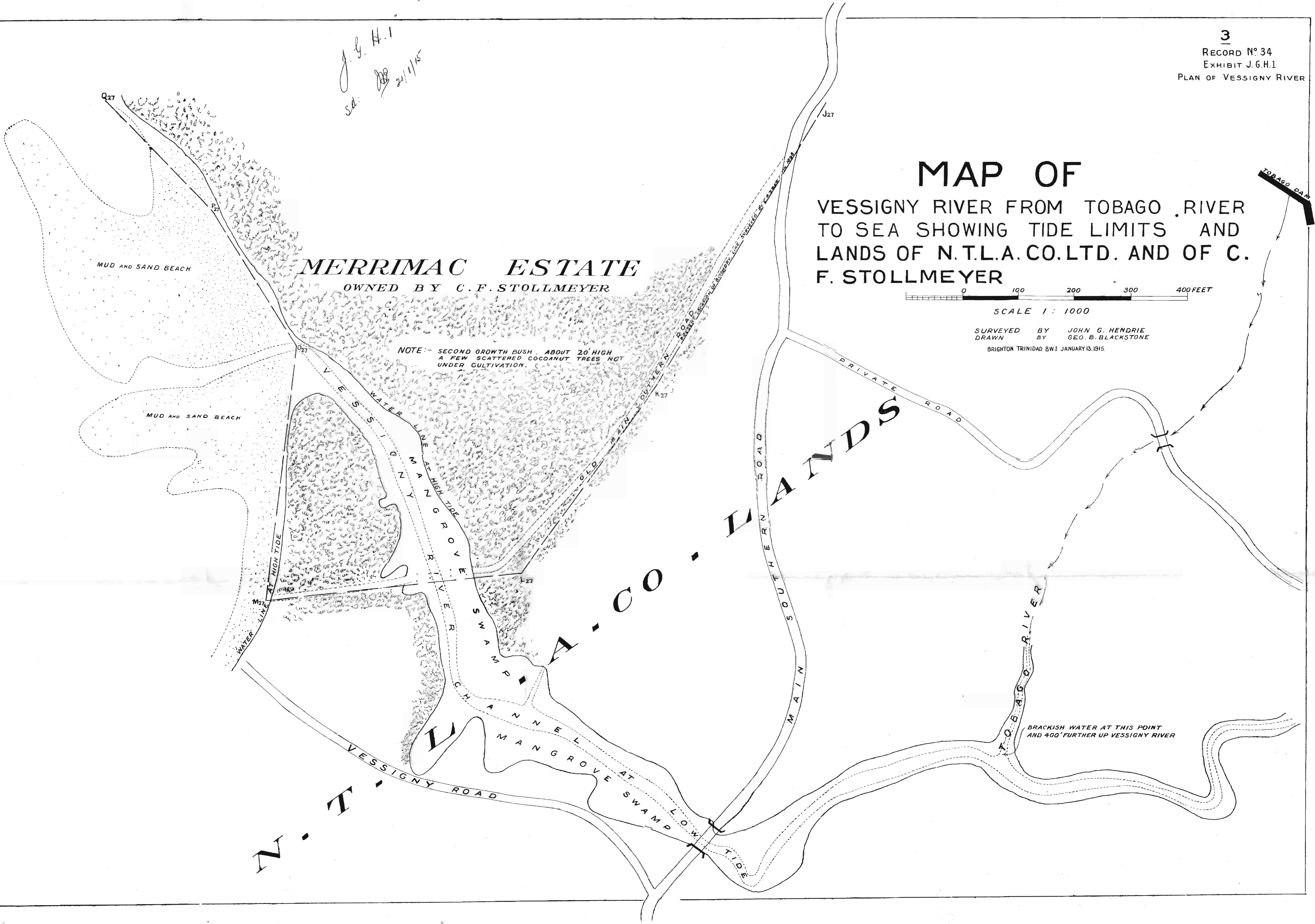
MUD AND SAND BEACH

MUD AND SAND BEACH

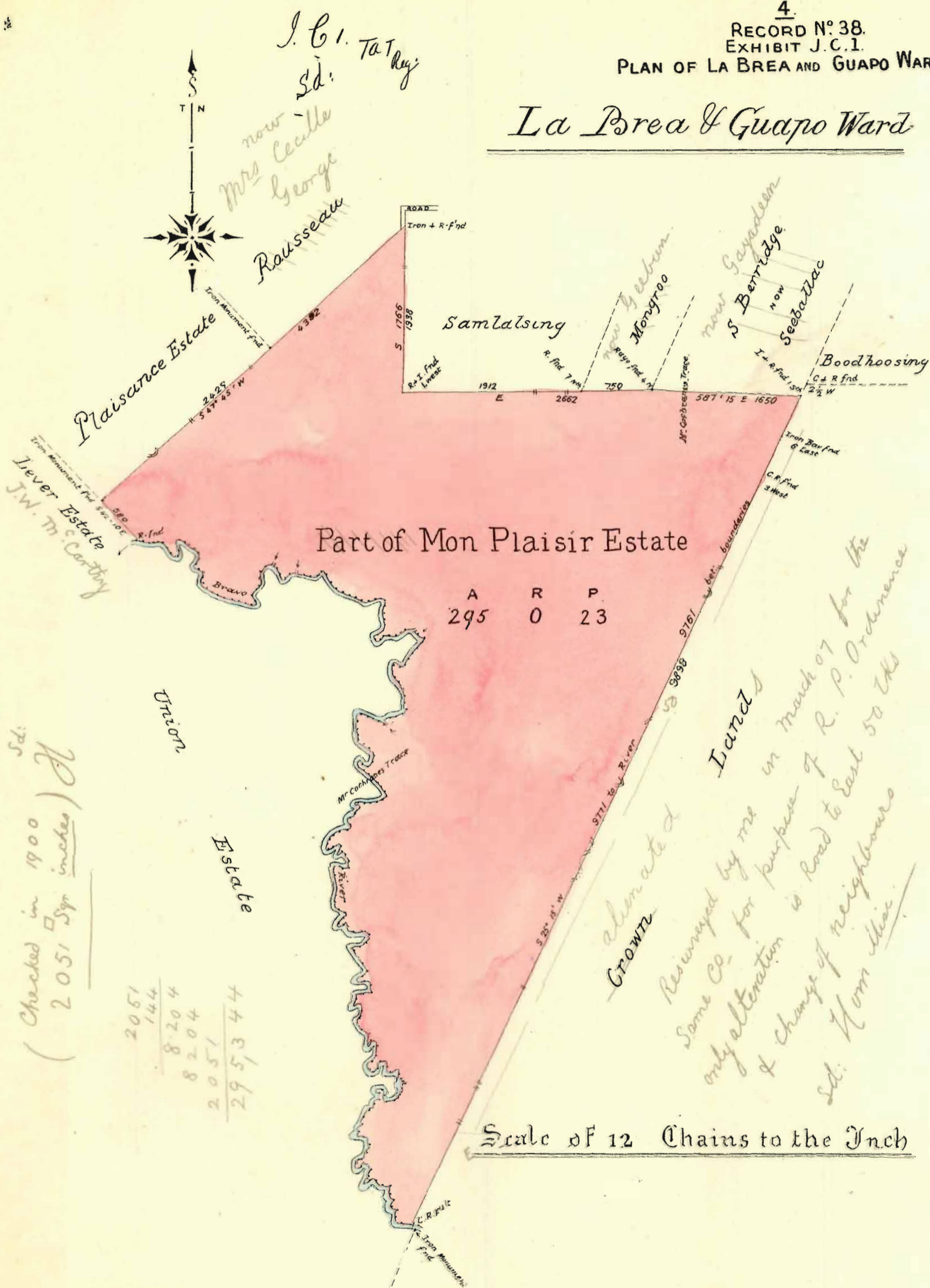
N.T.L.A. CO. LTD.

N.T.L.A. CO. LTD.

BRACKISH WATER AT THIS POINT
AND 400' FURTHER UP VESSIGNY RIVER



La Brea & Guapo Ward



Part of Mon Plaisir Estate

A R P
 295 0 23

Sd:
 (Checked in 1900
 2051 Sq inches) J

2051
 144
 8204
 8204
 2051
 295344

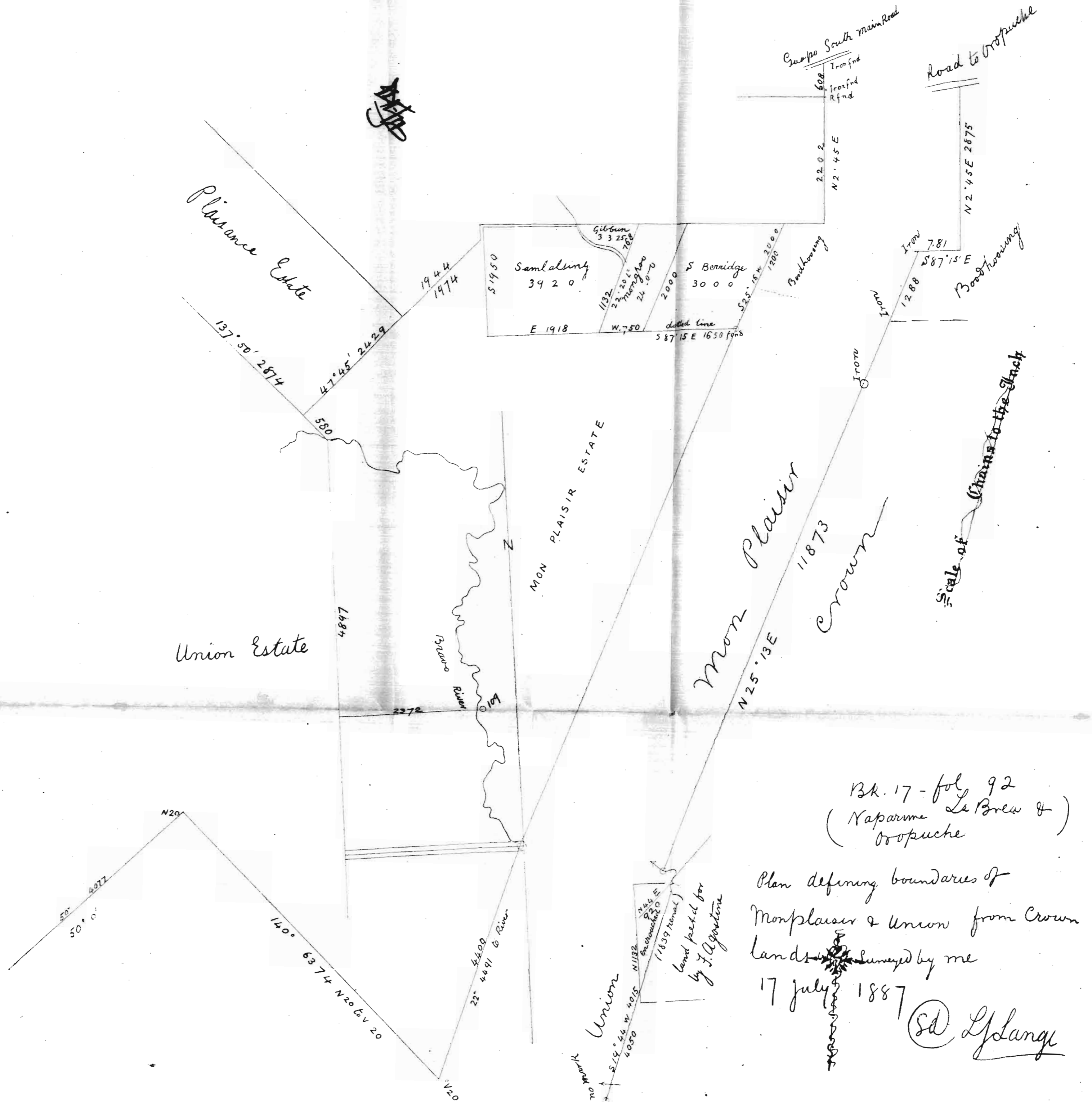
altered
 GROWN
 Reimposed by me in March 07 for the
 Some Co. for purpose of R. P. Ordinance
 only alteration is Road to East 50 Chs
 & change of neighbours
 Sd: Norm Mac

Scale of 12 Chains to the Inch

Plan of part of the "Mon Plaisir Estate" situate in the Ward of La Brea & Guapo containing Two hundred and ninety five acres and twenty three perches, surveyed by me in October 1900 at the request of The New Trinidad Lake Asphalt Company

Sd: Julius von Meiss
 Trinidad 22nd October 1900
 Sworn Surveyor

J. B. 2
 sd. 701 Ky



BK. 17 - fol. 92
 (Naparme Le Breu &)
 Oropuche

Plan defining boundaries of
 Monplaisir & Union from Crown
 lands surveyed by me

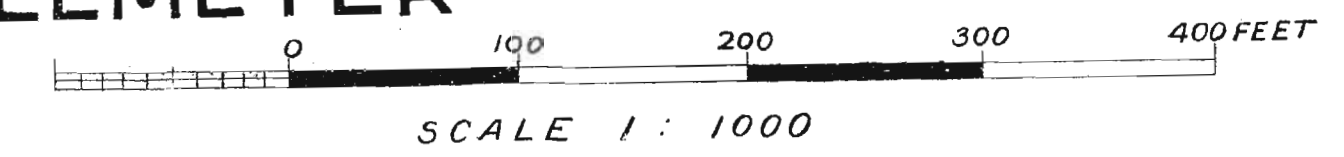
17 July 1887

sd. L. Langé

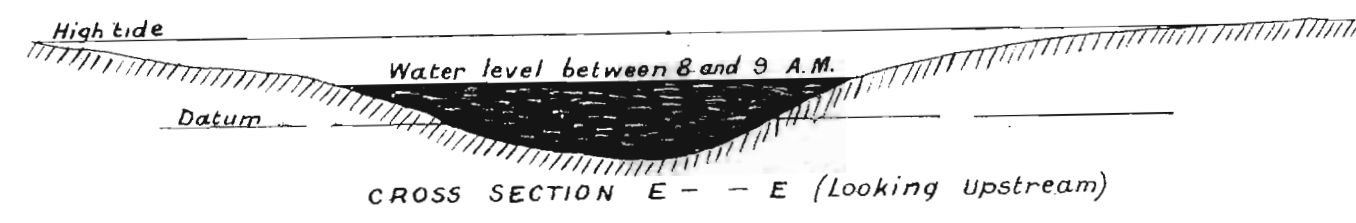
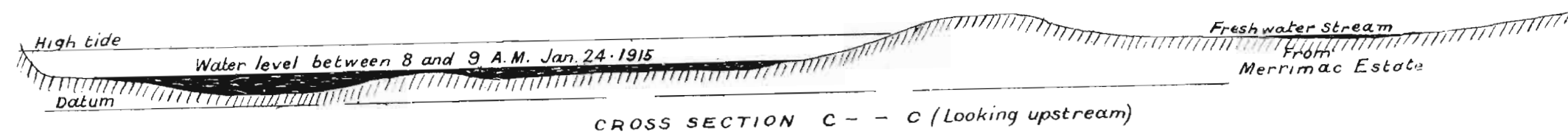
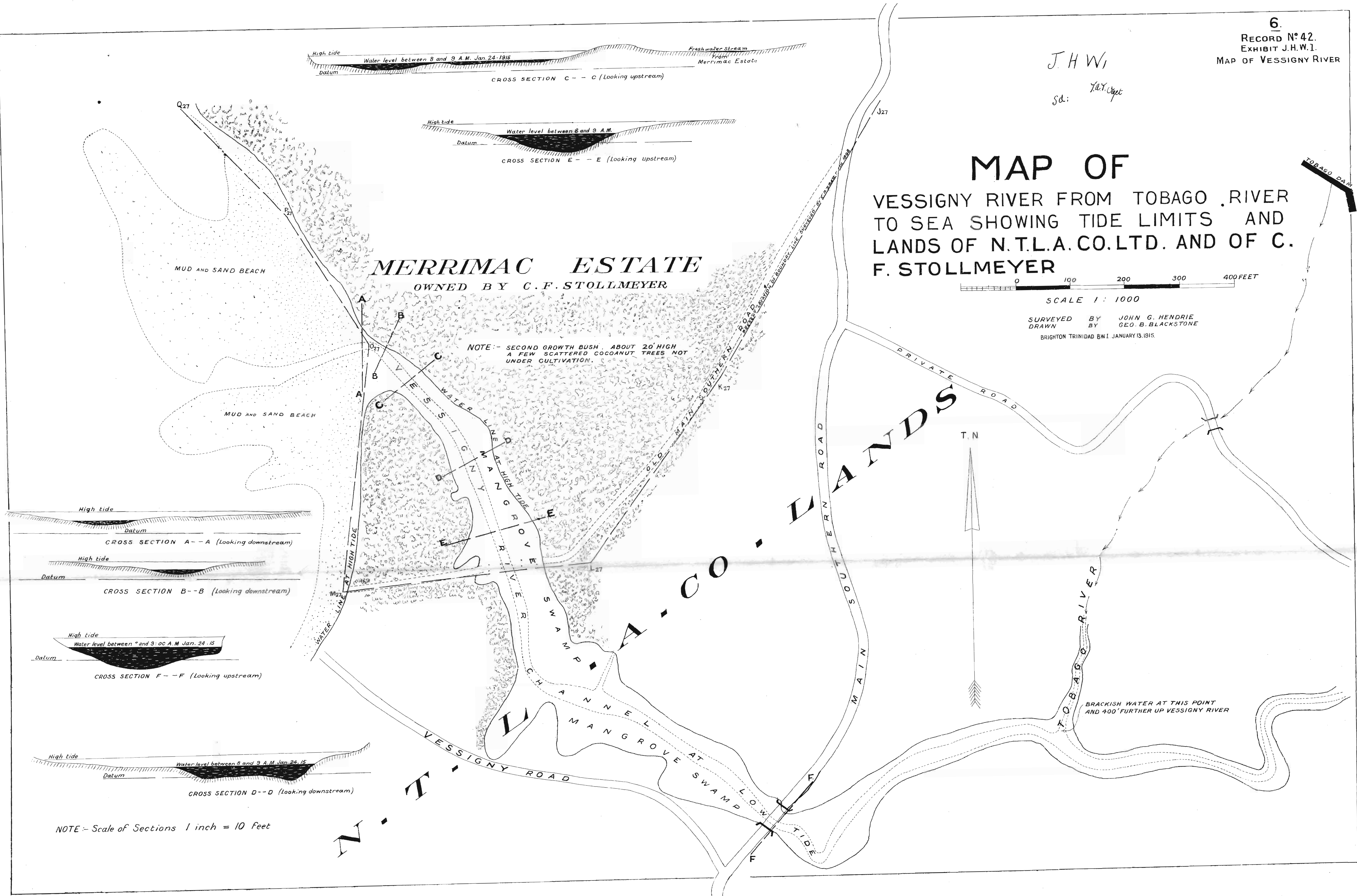
J.H.W.I.

Sd: T.C. O'Neil

MAP OF VESSIGNY RIVER FROM TOBAGO RIVER TO SEA SHOWING TIDE LIMITS AND LANDS OF N.T.L.A. CO. LTD. AND OF C. F. STOLLMAYER

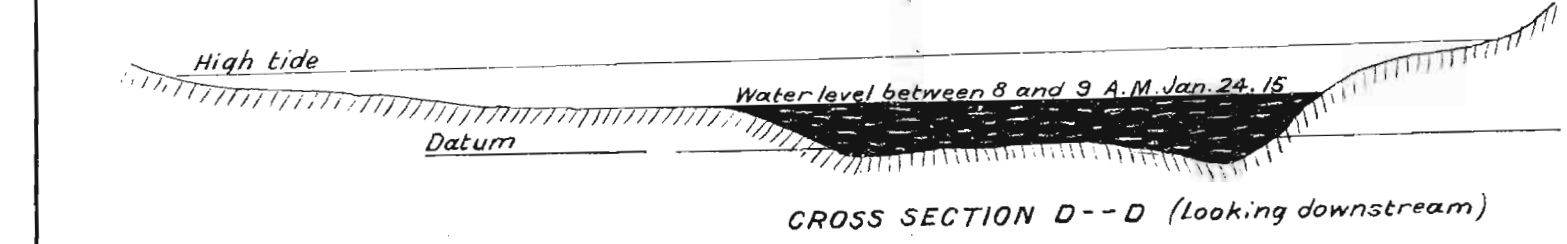
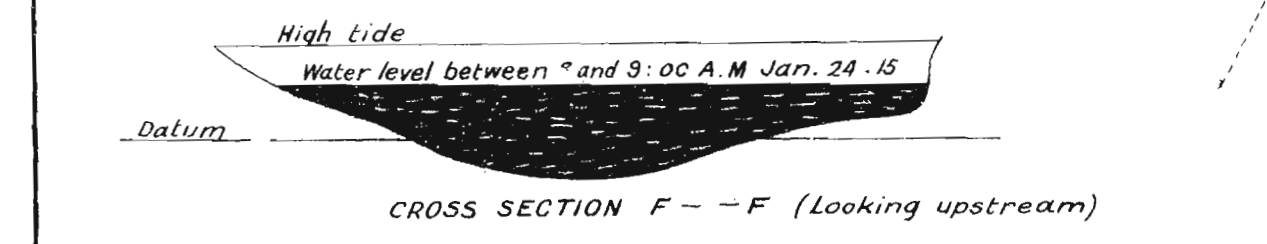
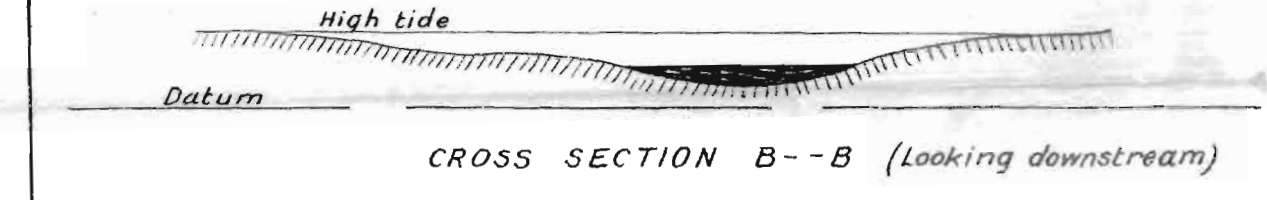
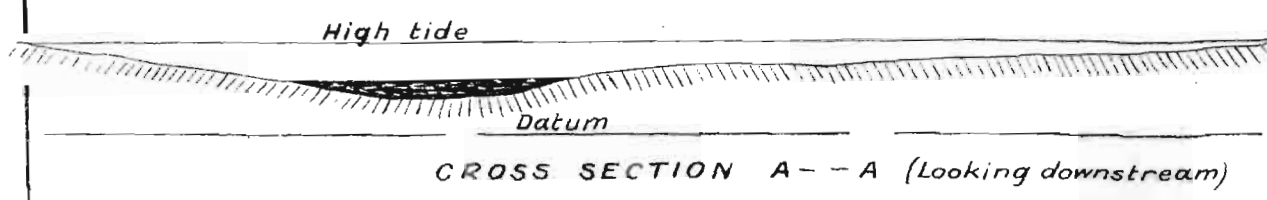


SURVEYED BY JOHN G. HENDRIE
DRAWN BY GEO. B. BLACKSTONE
BRIGHTON TRINIDAD B.W.I. JANUARY 13, 1915.



MERRIMAC ESTATE
OWNED BY C.F. STOLLMAYER

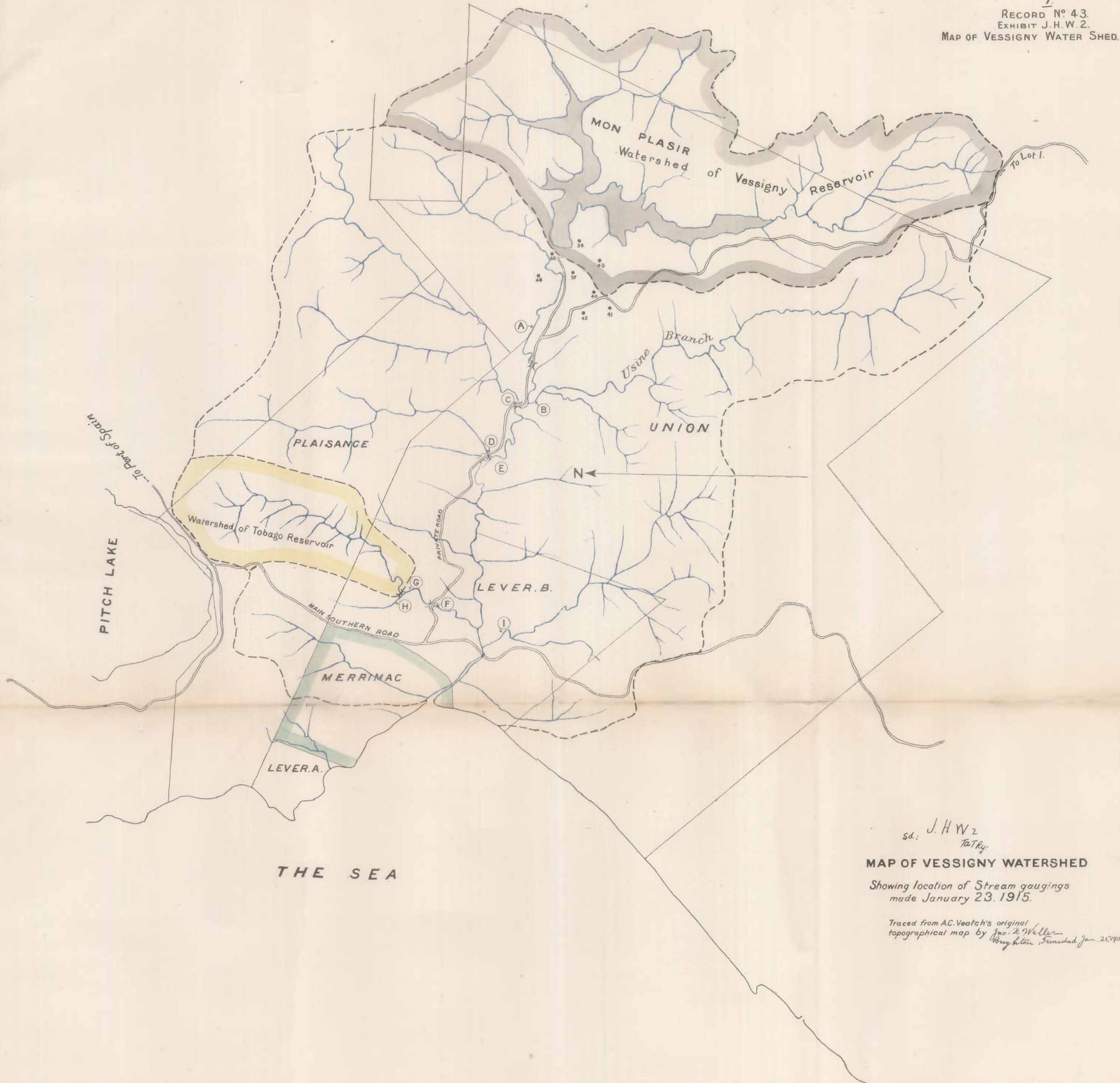
NOTE: - SECOND GROWTH BUSH, ABOUT 20' HIGH
A FEW SCATTERED COCONUT TREES NOT
UNDER CULTIVATION.



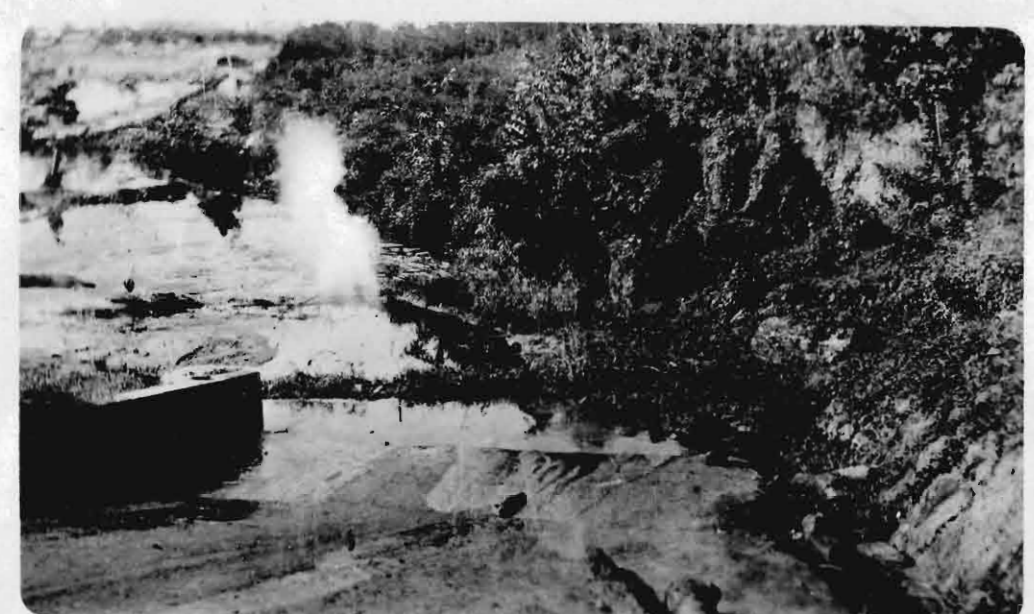
NOTE: - Scale of Sections 1 inch = 10 feet

N.T.L.A.

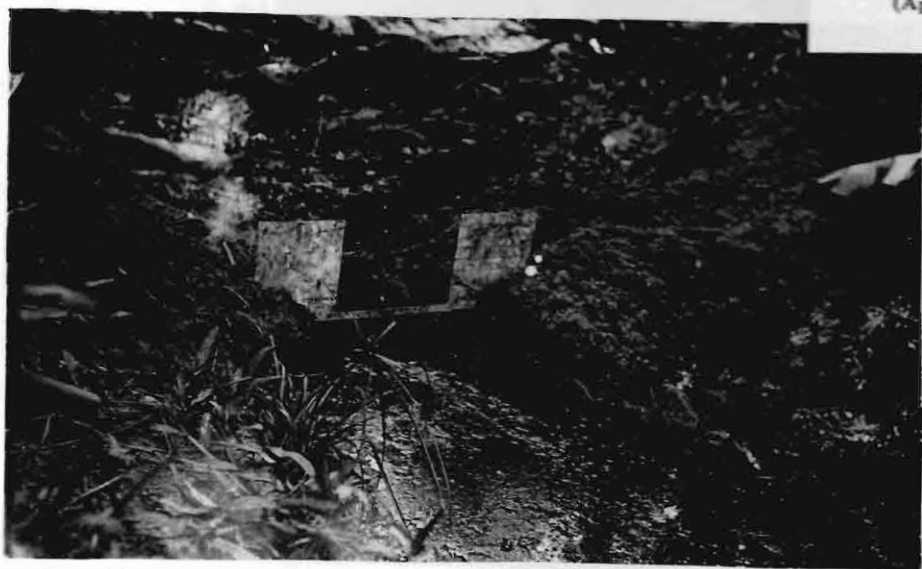
BRACKISH WATER AT THIS POINT
AND 400' FURTHER UP VESSIGNY RIVER



sd: J.H.W. 2
T.H.K.
MAP OF VESSIGNY WATERSHED
Showing location of Stream gaugings
made January 23, 1915.
Traced from A.C. Veatch's original
topographical map by Jno. L. Waller
Wrightston, Trinidad Jan. 25, 1915







Wier Upper Vassays



Mouth of Vassays looking in



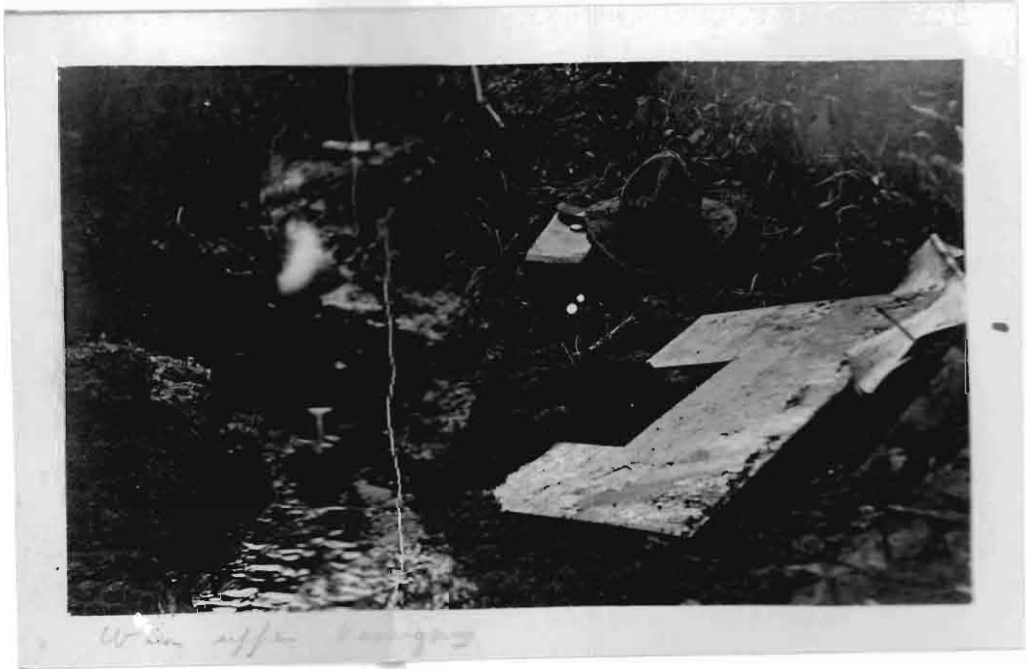
Mouth of Vassays looking in



Wier Upper Vassays



View of trench



View of trench



View of trench



View of trench

10

RECORD No. 46.
Exhibit A.I. 1.
One Photograph.
(Appendix G.)



11

RECORD No. 47.
Exhibit A.I. 2.
Two Photographs.
(Appendix H.)

